

Healthcare Transformation: Artificial Intelligence's Transformative Impact in Medical Imaging and Diagnosis

¹Charanjeet Kaur, ²DR. Rajinder Kumar, ³Manpreet Kaur, ⁴Manpreet Singh

^{1,3,4} Assistant Professor, University College Dhilwan, Barnala, Punjab.

² Associate Professor, Guru Khasi University Talwandi Sabo, Bathinda, Punjab.

DOI: <https://doi.org/10.51583/IJLTEMAS.2025.140500027>

Received: 22 May 2025; Accepted: 26 May 2025; Published: 03 June 2025

Abstract: AI is changing the way medical imaging and analysis are done, which is transforming healthcare. AI is improving the speed, accuracy, and efficiency of finding diseases, diagnosing them, and planning treatments by helping those analyze huge amounts of data. Deep learning and machine learning are both AI-powered technologies that are making radiology and imaging-based diagnostics better. They also make early disease identifying and personalized medicine possible. This paper talks about AI's present and future potential role in medical imaging and evaluation, focusing on its uses, advantages, and difficulties. Radiology and pathology are being revolutionized by AI, from picture identification and analysis to automated image segmentation and categorization. AI is also making predictive analytics, finding new drugs, and virtual health helpers better. AI could completely change healthcare, but there are some problems that need to be fixed before it can be used widely. These include limited data, rule-based issues, moral concerns, and problems with integrating AI with other systems. As AI technology improves, it will continue to improve medical decisions and patient care around the world. This will make the healthcare system more efficient and improve patient results.

Index Terms: Artificial Intelligence, Medical Imaging, Historical Perspective, Diagnostics, Electronic Health Records (Ehrs) Classification, Challenges.

I. Introduction

AI has greatly changed healthcare, especially in how we look at medical images and find illnesses. AI technologies, like deep learning, have made finding and treating diseases much more accurate, quick, and effective. Because they indicate what's going on inside the body, medical imaging like X-rays and MRIs are crucial for illness detection.

AI's future in healthcare looks good, with studies working on analyzing images instantly, using robots to help with surgery, and giving treatment advice tailored to each person. As AI gets better, it will keep improving how well we diagnose illnesses, lower expenses, and make healthcare better for everyone. AI in medical imaging and diagnosis is changing healthcare by finding diseases sooner, making diagnoses more accurate, and making work faster, which ultimately saves lives and helps medicine advance.

Various medical imaging procedures, such as CT, MRI, and PET, produce copious volumes of data. These images are suitable for analysis by AI, particularly deep learning. AI can recognize complex patterns that humans might miss and even suggest new important image features. Improving the speed and accuracy of illness diagnosis is a major advantage of AI.

By rapidly and accurately analyzing images, AI algorithms can help in the detection of early-stage diseases that are difficult to detect using traditional approaches. This, in turn, can increase the likelihood of timely interventions and better results.

Brief Overview of AI in Healthcare: A Historical Perspective

Artificial Intelligence (AI) has consistently developed in healthcare, with its applications extending throughout this period.

Figure 1: Artificial Intelligence Timeline

Here's a brief historical overview of AI's journey in healthcare:

1950s-1970s: The Foundations of AI in Medicine

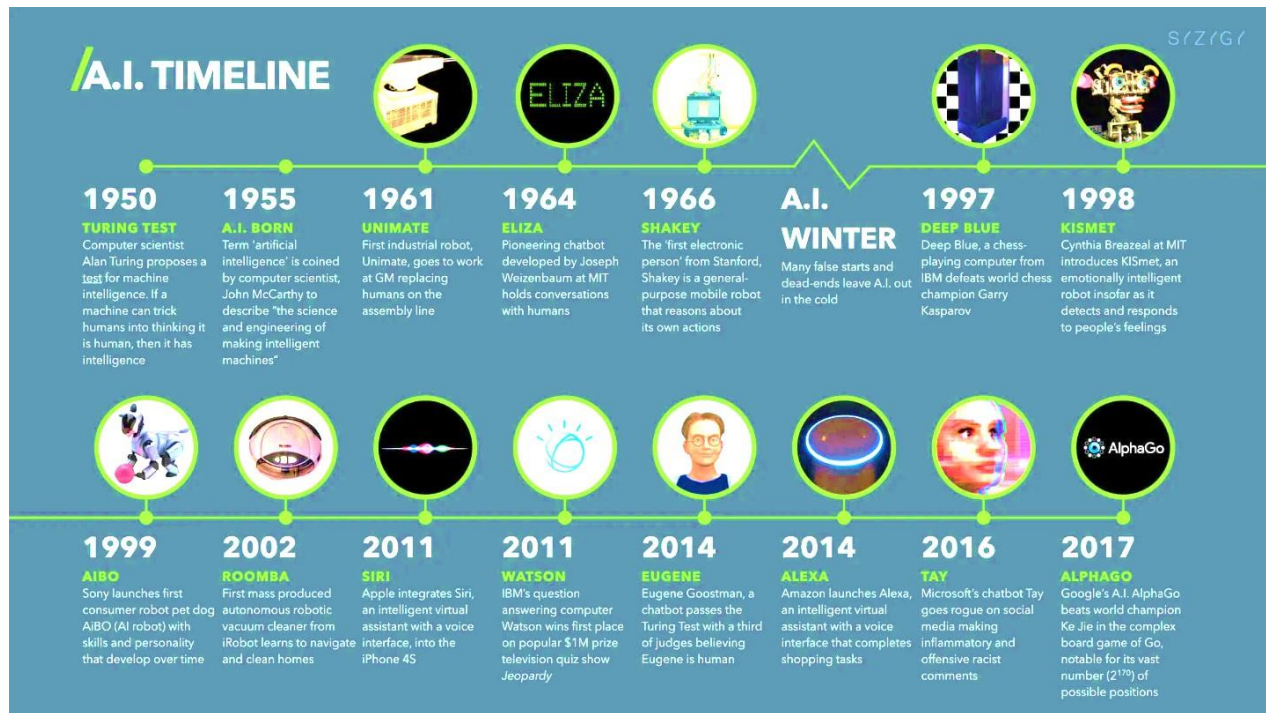
The concept of AI emerged with early research on machine learning and neural networks.

In the 1960s, early AI programs like Dendral (used for chemical analysis) and MYCIN (an expert system for diagnosing bacterial infections) were developed, demonstrating AI's potential in medical diagnosis.

Decision Support and Expert Systems

Clinical decision support systems (CDSS) enhanced by artificial intelligence were developed to assist in diagnosis and medicine.

However, limited computing power and lack of data hindered widespread adoption.



The Rise of Machine Learning and Big Data

Advancements in machine learning, namely in support vector machines and decision trees, boosted AI's analytical capability. The growth of electronic health records (EHRs) and digital imaging provided large datasets for AI to analyze.

Deep Learning and Ai-Driven Healthcare Innovations

Advancements in diagnostic imaging, personalized medicine, and deep learning/neural networks/natural language processing (NLP) have revolutionized the medical field. AI-powered tools like IBM Watson Health, Google Deep Mind, and AI-assisted radiology became widely used.

AI applications expanded to include robotic surgery, drug discovery, predictive analytics, and virtual health assistants.

Current role of AI in Medical Imaging:

AI has transformed medical imaging, enhancing diagnostic accuracy, efficiency, and speed.

AI-powered technologies, particularly **deep learning and machine learning**, are transforming radiology and imaging-based diagnostics. Here's how AI is currently being used in medical imaging:

Image Recognition and Analysis

AI can detect patterns in imaging (X-rays, MRIs, CT scans, and ultrasounds) with high accuracy. Deep learning models, such as Convolutional Neural Networks (CNNs), help identify abnormalities like tumors, fractures, or organ damage.

Early Disease Detection and Diagnosis

AI helps identify illnesses early such as cancer, stroke, cardiovascular diseases, and neurological disorders. Example: AI in mammography improves breast cancer detection by identifying tiny lesions that might be missed by radiologists.

Automated Image Segmentation and Classification

AI algorithms automatically segment and classify medical images, reducing manual effort and improving consistency. Example: AI can differentiate between **benign and malignant tumors** in radiology images.

Speeding up Radiology Workflow

AI **prioritizes critical cases** by flagging abnormal scans for faster review, helping radiologists focus on urgent patients. Example: AI in **stroke detection** rapidly identifies blood clots in CT scans, enabling quicker intervention.

Reducing Diagnostic Errors

AI reduces false positives and false negatives, increasing diagnostic accuracy. AI-based second opinions help radiologists make more informed decisions, minimizing human errors.

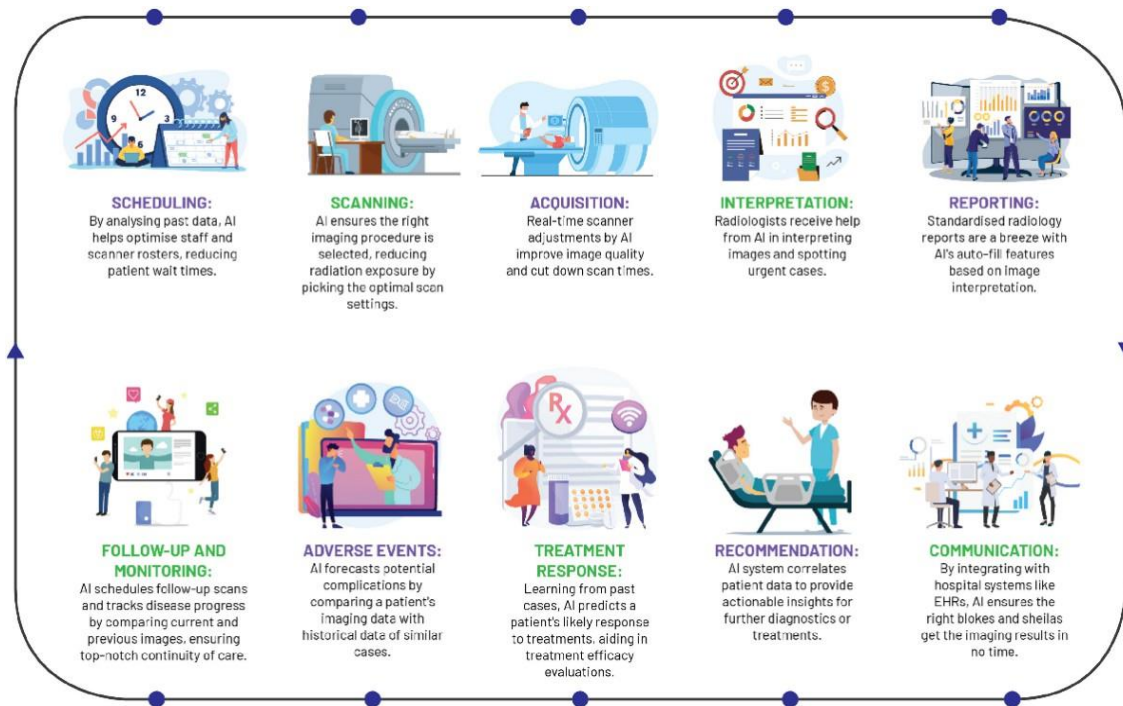


Figure 1. A simplified workflow diagram showing radiology's use of AI.

Integration with Electronic Health Records (EHRs)

AI combines medical patient history and imaging data to provide a more comprehensive diagnosis. Example: AI-powered platforms can suggest personalized treatment plans based on imaging and clinical data.

AI in 3D Imaging and Reconstruction

AI assists in **3D reconstruction of organs and tissues**, improving surgical planning and visualization. Example: AI helps create **3D models of the brain or heart** for more precise diagnoses.

Current Role of AI in Diagnostics:

Figure 3. AI in Diseases Diagnostics

Disease Detection and Early Diagnosis

AI analyzes symptoms, medical records, and imaging data to detect diseases at an early stage. Example: AI in cancer diagnosis identifies tumors in radiology scans before visible signs appear.

AI-Powered Medical Imaging

AI enhances X-rays, MRIs, CT scans, and ultrasounds, helping detect abnormalities such as fractures, tumors, and infections. Example: AI in mammography detects breast cancer with higher accuracy than traditional methods.

Pathology and Lab Test Analysis

AI assists in analyzing blood tests, biopsy samples, and genetic data to detect diseases like cancer, diabetes, and infections. Example: AI models in hematology detect abnormal blood cell counts for diagnosing leukemia.

Predictive and Personalized Diagnostics

AI integrates patient history, lifestyle, and genetic data to predict disease risks and personalize treatment. Example: AI algorithms assess cardiovascular disease risk by analyzing heart rate, cholesterol levels, and medical history.

AI in Infectious Disease Diagnosis

AI helps identify COVID-19, tuberculosis, and other infections by analyzing symptoms and imaging data. Example: AI-powered chest X-ray analysis detects lung infections with high accuracy.

NLP for Medical Documentation Diagnosis

AI-powered Natural Language Processing (NLP) extracts insights from doctor's notes, medical literature, and EHRs for faster diagnosis. Example: AI Chabot's and virtual assistants assist in symptom checking and triaging patients.

AI in Genomic and Precision Medicine

AI helps in genetic sequencing and mutation analysis, allowing personalized treatment for genetic disorders and cancer. Example: AI analyzes DNA sequences to predict hereditary disease risks.

While AI has significantly advanced medical imaging and diagnostics, several challenges remain in its widespread adoption and effectiveness. These challenges include technical, ethical, regulatory, and operational barriers.

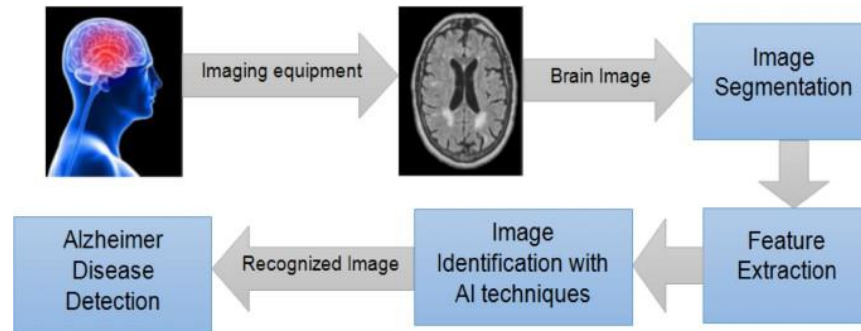


Figure 2. AI in Diseases Diagnostics AI is transforming improving diagnostic accuracy, efficiency, and early disease detection. AI-powered tools, including deep learning, machine learning, and NLP assist healthcare professionals in diagnosing diseases faster and more precisely. Here's how AI is currently being used in diagnostics:

Quality, availability of data

AI training models have high-quality, diversified, and well-labeled datasets.

Medical images can vary in quality due to differences in scanning equipment, protocols, and patient demographics, making it difficult to create generalized AI models.

Lack of Standardization

AI models are trained using different datasets and methodologies, leading to variability in results across different healthcare institutions.

The lack of universal AI standards in medical imaging makes it difficult to integrate AI into clinical workflows.

Explainability and Transparency

AI models, particularly deep learning algorithms, are "black boxes," making their decision-making process difficult for clinicians to understand.

Clinicians may hesitate to trust AI-driven diagnoses if they do not understand how the system reached a conclusion.

Regulatory and Legal Challenges

AI in healthcare must comply with strict regulations (e.g., FDA, CE marking, HIPAA) to ensure patient safety and data privacy.

Liability issues arise when AI makes an incorrect diagnosis—determining responsibility between AI developers and healthcare providers is complex.

Integration with Existing Systems

AI must integrate seamlessly with Electronic Health Records (EHRs), PACS (Picture Archiving and Communication Systems), and hospital IT infrastructure.

Many healthcare facilities use outdated systems that are not compatible with AI-based solutions.

Ethical Concerns and Bias

Disparities in diagnosis across populations may occur when AI models inherit biases from the data they are trained on.

If AI is trained mostly on one ethnic or demographic group, it may perform poorly on underrepresented groups, leading to misdiagnoses.

High Implementation Costs

Developing, deploying, and maintaining AI-based diagnostic systems requires significant investment in computing resources and skilled personnel.

Many healthcare institutions, especially in low-resource settings, struggle to afford AI-based technologies.

Resistance from Healthcare Professionals

Many radiologists and doctors fear AI will replace their jobs, leading to skepticism and resistance to adoption.

Training healthcare professionals to work alongside AI requires additional time and effort.

Rephrase for conciseness and clarity.

Correct grammar and sentence structure (e.g., "those analyze" should be "those who analyze").

Add 1–2 sentences that highlight specific findings or claims from the paper

Future Directions to Overcome Challenges

Improving AI transparency: Developing interpretable AI models to enhance clinician trust.

Better data collection and standardization: Ensuring diverse and high-quality datasets for unbiased AI training.

Stronger regulations and ethical frameworks: Establishing clearer guidelines for AI accountability.

Enhancing AI-human collaboration: Training medical professionals to use AI as an assistive tool rather than a replacement.

The Potential Benefits of AI for the Future of Healthcare:

Medical Imaging & Diagnosis: Artificial Intelligence (AI) is set to revolutionize medical imaging and diagnostics, making healthcare more accurate, efficient, and accessible. With advancements in deep learning, computer vision, and big data analytics, AI will play an even greater role in disease detection, treatment planning, and workflow optimization.

AI-Powered Real-Time Imaging and Diagnosis

Future AI models will analyze medical images in real-time, allowing for instant diagnoses during patient examinations.

AI-assisted ultrasound and MRI scans will enable real-time guidance for surgeons and interventional radiologists.

Enhanced Disease Detection and Precision Medicine

Artificial intelligence will make it easier to detect diseases in their early stages by spotting patterns in imaging data that humans miss.

Personalized medicine will be enhanced, where AI combines genomic data with imaging to recommend customized treatment plans.

Example: AI-driven liquid biopsy imaging for early cancer detection will become more common.

AI-Driven Automation and Workflow Optimization

AI can automate common processes like picture segmentation, classification, and report production to reduce radiologist workload.

AI-powered chatbots and virtual assistants will streamline patient interactions, helping with appointment scheduling and preliminary assessments.

Hospitals will use AI for case prioritization, ensuring urgent cases are reviewed first.

AI in 3D Imaging and Augmented Reality (AR) for Surgery

AI will assist in 3D reconstruction of organs and tissues, helping surgeons with preoperative planning.

Augmented Reality (AR) and AI-guided navigation will enhance robot-assisted surgeries, improving precision in complex procedures.

AI-Powered Mobile Diagnostics and Telemedicine

AI-enabled smartphone-based medical imaging apps will allow patients to self-monitor and detect diseases remotely.

AI will support telemedicine and remote diagnostics, making healthcare accessible in underserved areas.

Example: AI-powered portable ultrasound devices will help diagnose diseases in rural and remote locations.

Explainable AI (XAI) and Improved Trust in AI Systems

AI models will become more interpretable, allowing doctors to understand and trust AI-driven decisions.

AI systems will be encouraged by regulatory agencies to offer diagnostic reasoning that is both transparent and understandable.

Integration with Block chain and Data Security Enhancements

AI will integrate with block chain technology to ensure secure and tamper-proof patient data storage.

HIPAA and GDPR compliance, as well as patient data privacy, will be improved with the use of advanced encryption techniques.

AI in Drug Discovery and Predictive Diagnostics

AI will analyze medical imaging data to predict disease progression and assist in early drug discovery.

Example: AI will help identify new biomarkers for diseases like Alzheimer's and Parkinson's, enabling early intervention.

Challenges to Address

Regulatory approvals will be required to ensure AI safety and reliability in medical imaging.

Bias in AI models must be minimized by using diverse datasets for training.

Adoption barriers include high costs, lack of AI-trained professionals, and integration challenges with legacy healthcare systems.

II. Conclusion

Artificial intelligence (AI) has changed from rule-based systems to deep learning models in healthcare, revolutionizing diagnosis, treatment, and patient care on a global scale. By boosting accuracy, automating operations, and enabling early illness identification, AI is transforming medical imaging and, in the end, improving patient outcomes. By facilitating early disease identification, increasing precision, and improving workflow efficiency, AI is transforming medical imaging and diagnostics. Worldwide, patient care and medical decision-making will be further improved by the continued advancement of AI technology. Although artificial intelligence (AI) could completely transform medical imaging and diagnostics, there are still several obstacles that need to be overcome before it can be fully implemented. These include data limits, legal impediments, ethical issues, and integration difficulties. The potential for AI to become a reliable and useful tool in healthcare lies on its ability to undergo ongoing improvement and ethical development. Solutions powered by AI have the potential to revolutionize medical imaging and diagnostics by making them more accessible, efficient, and accurate in the future. Radiology, pathology, telemedicine, and personalized healthcare will all undergo revolutionary changes as a result of AI's rapid advancements, which will improve patient outcomes and make healthcare systems more efficient overall.

Reference:

1. Lambin P, Rios-Velazquez E, Leijenaar R, Carvalho S, van Stiphout RGPM, Granton P, et al. Radiomics: extracting more information from medical images using
2. Thompson RF, Valdes G, Fuller CD, Carpenter CM, Morin O, Aneja S, et al. Artificial intelligence in radiation oncology imaging. *Int J Radiat Oncol Biol Phys* 2018; 102: 1159–61. doi: <https://doi.org/10.1016/j.ijrobp.2018.05.070>
3. Hitaj B. Deep models under the GAN: information leakage from collaborative deep learning. *Cryptography and Security* 2017; arXiv–1702.
4. Hosny A, Parmar C, Quackenbush J, Schwartz LH, Aerts HJWL. Artificial intelligence in radiology. *Nat Rev Cancer* 2018; 18: 500–10. doi: <https://doi.org/10.1038/s41568-018-0016-5>
5. Pesapane F, Codari M, Sardanelli F. Artificial intelligence in medical imaging: threat or opportunity? Radiologists again at the forefront of innovation in medicine.
6. Coelho, L. (2023). How Artificial Intelligence Is Shaping Medical Imaging Technology: A Survey of Innovations and Applications. In *Bioengineering* (Vol. 10, Issue 12, p. 1435). Multidisciplinary Digital Publishing Institute. <https://doi.org/10.3390/bioengineering10121435>.